

A world map with a dark blue background and light blue outlines of continents. Numerous small blue dots are scattered across the map, with a higher concentration in the North Atlantic and Europe. A large, solid grey triangle is positioned on the left side of the map, pointing towards the right. A thin, vertical yellow dashed line runs through the center of the triangle.

# Finding Our Way During a National Pandemic

Southeastern District Webcast  
April 27, 2020

+

-



**3) Where we are going**

resources that may be helpful in the future

**2) Where we are**

& how you are meeting  
our present challenges

**1) Where we have been  
over the last 40 days &  
how you've responded**

**Some Beginning Thoughts**





## Beginning Thoughts



“When you see the ark of the covenant of the Lord our God, and the priests, who are Levites, carrying it, you are to move out from your position and follow it.

Then you will know which way to go, since you have never been this way before”

(Joshua 3:3-4)

A world map with a dark blue background and light blue outlines of continents. Numerous small blue dots are scattered across the map, with a higher concentration in Europe and North America. A large grey trapezoid is positioned on the left side of the map, pointing towards the text. A vertical dashed yellow line is visible within the trapezoid.

**1) Where we have been over the last 40 days  
& how you've responded**

+

-



# The Growing Impact of the Coronavirus On Us

Global Pandemic	03/30/2020	04/05/2020	04/13/2020	04/19/2020	04/26/2020
Infected	677,622	1,237,420	1,859,011	2,394,291	2,954,106
Recovered	141,698	252,944	438,236	611,880	860,875
Deaths	31,750	67,260	114,979	164,938	205,398
United States					
Infected	124,697	327,253	561,103	764,177	983,160
Recovered	3,231	16,735	46,730	70,172	108,784
Deaths	2,227	9,302	22,106	40,591	55,156



# Coronavirus Stats within SED Boundaries



States	Deaths
District of Columbia	178
Delaware	120
Maryland	910
North Carolina	325
South Carolina	174
Pennsylvania (York County)	8
Virginia	448
Southeastern District	2,163



# A Glimpse at the Last 40 Days





## The response from our ministries:

- Estimated that 95% of our churches made other plans for worship
- Reports of higher than average worship attendance
- Communion has been a big concern
- We're trying to find out how many applied for PPP
- Receptivity to innovation in LCMS congregations
- A few concerns about 1<sup>st</sup> Amendment rights
- Many church workers working harder than ever

March 15  
Decision  
whether to  
cancel  
worship

Video  
Technology  
experiments  
for worship

•Where we have been  
over the last 40 days  
how you've responded

A dark blue world map with white outlines of continents and countries. Numerous small blue circles of varying sizes are scattered across the map, representing data points. A large, semi-transparent grey trapezoid is overlaid on the left side of the map, with a vertical dashed yellow line running through its center. The text is positioned to the right of the trapezoid.

**2) Where we are**  
& how you are meeting  
our present challenges





## **Where we are** & how you are meeting present challenges

Congregations have adapted to temporary systems of worship, Bible Study, and meetings

Pastoral care is happening through telephone and video technology

Congregations with schools and CDC's are having the greatest concerns

8/20 of our CDCs are open for children of essential workers

Present questions about the difference in the application between the first PPP loan application and this one

The looming question: when and how do we start again

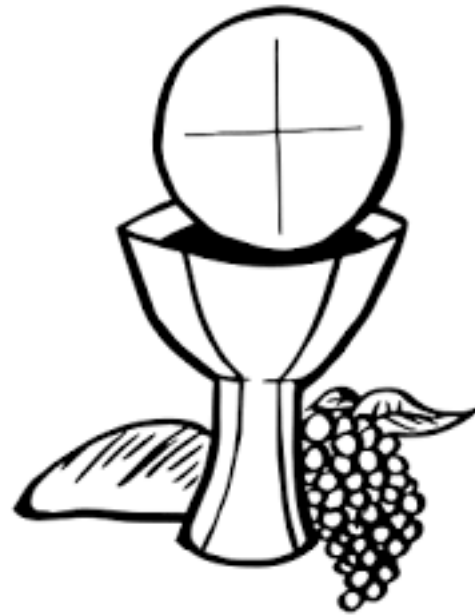


# How Congregations are Handling Communion

Eucharistic  
Fast

Drive By  
Communion

Virtual  
Communion



Communion  
at church by  
appointment  
1-9 people

Communion  
Consecrated  
on Zoom  
Distributed by  
Small Group  
Leaders

A world map with a dark blue background and light blue outlines of continents. Numerous small blue dots are scattered across the map, with a larger, semi-transparent blue circle highlighting a specific area in the central United States. A grey trapezoidal shape is overlaid on the left side of the map, with a vertical dashed yellow line running through its center. The text '3) Where we are going' is written in yellow, and 'resources that may be helpful in the future' is written in white below it.

### 3) Where we are going

resources that may be helpful in the future





## Some of the questions we have or will have

When do we gather again in our sanctuaries?

How will we handle our financial situation?

What happens if we open and we discover one of us was infected?

What do we do about our school, preschool, day care ministry?

What do we need to do to prepare to go back to our building?

How do we care for our pastor and church workers?



# Professional Church Work Conference – Now An Online Series

Open to Everyone – presentations and break out groups on-line

Theme: Psalm 121: The Lord My Helper: In Our Coming & Going Out

Mon, May 11 @ 10 AM

Topic:

Caring for All God's People  
During an Epidemic

Presenter: The Rev. Dr.  
Bruce Hartung, Emeritus  
Professor, Concordia  
Seminary, St. Louis

Mon, May 18 @ 10 AM

Topic:

Helping the Church Return to  
the Building in the Safest Way

Presenter: Colonel Nancy  
Boriack, USAF (Retired)  
Working with Pandemics

Monday, Jun 8 @10 AM

Topic:

Caring for One's Family and  
Self During an Epidemic

Presenter: DCE Stacey  
Crosson, /Licenced  
Therapist with Safe Harbor  
Counseling



# Updated Cononavirus Information for You on the SED Website

One place to check as  
you search for  
inforatmion  
[WWW.SED.LCMS.ORG](http://WWW.SED.LCMS.ORG)

## VIEWING ALL LATEST RESOURCES



PAYCHECK PROTECTION PROGRAM



SPIRITUALLY CONNECTED



DEVOTIONAL ART



STEWARDSHIP & CHURCH FINANCE RESO...



RESOURCES FOR SCHOOLS DURING CLOS...



THE COVID-19 CORONAVIRUS

# Resources that are on the way . . .

Guidance for  
Congregation  
Meeting  
from our  
Legal Counsel

Lay Deacon  
House and  
Church  
Leader  
Training

Systematic  
Ways of  
Re-Entry at  
the Right  
Time





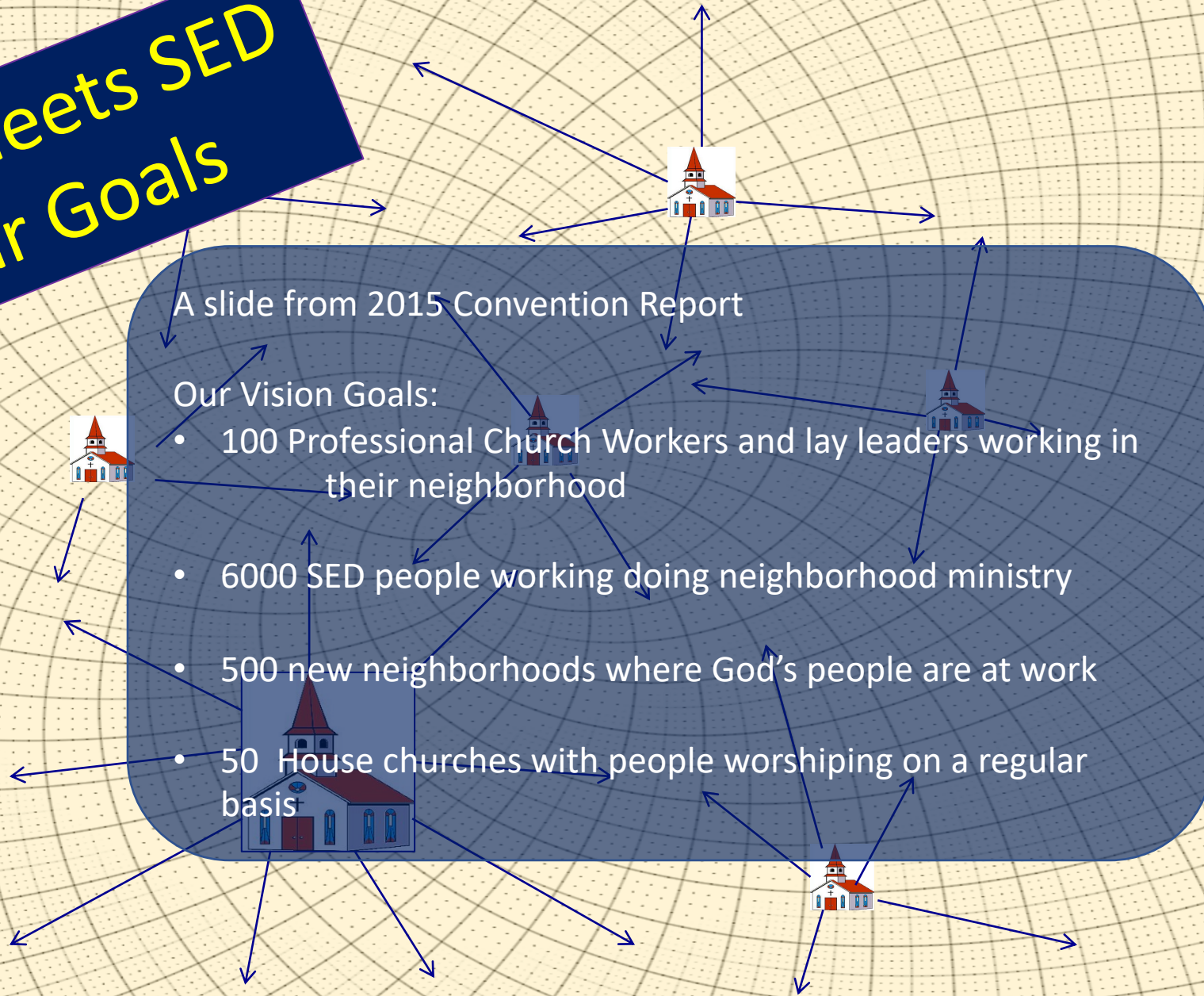
# Our Most Significant Resource

The  
Resource  
the People  
of God  
Alone Have

God is @  
Work  
The World  
Cannot See  
It

The Big Gifts  
Faith, Hope,  
Love

# God Meets SED Our Goals



As we work together to connect our neighbors to Jesus Lives are transformed and God's Kingdom grows.

SED Shared Vision



“Follow me”

*Jesus*

Finding Our Way  
During a National Pandemic

+

-